

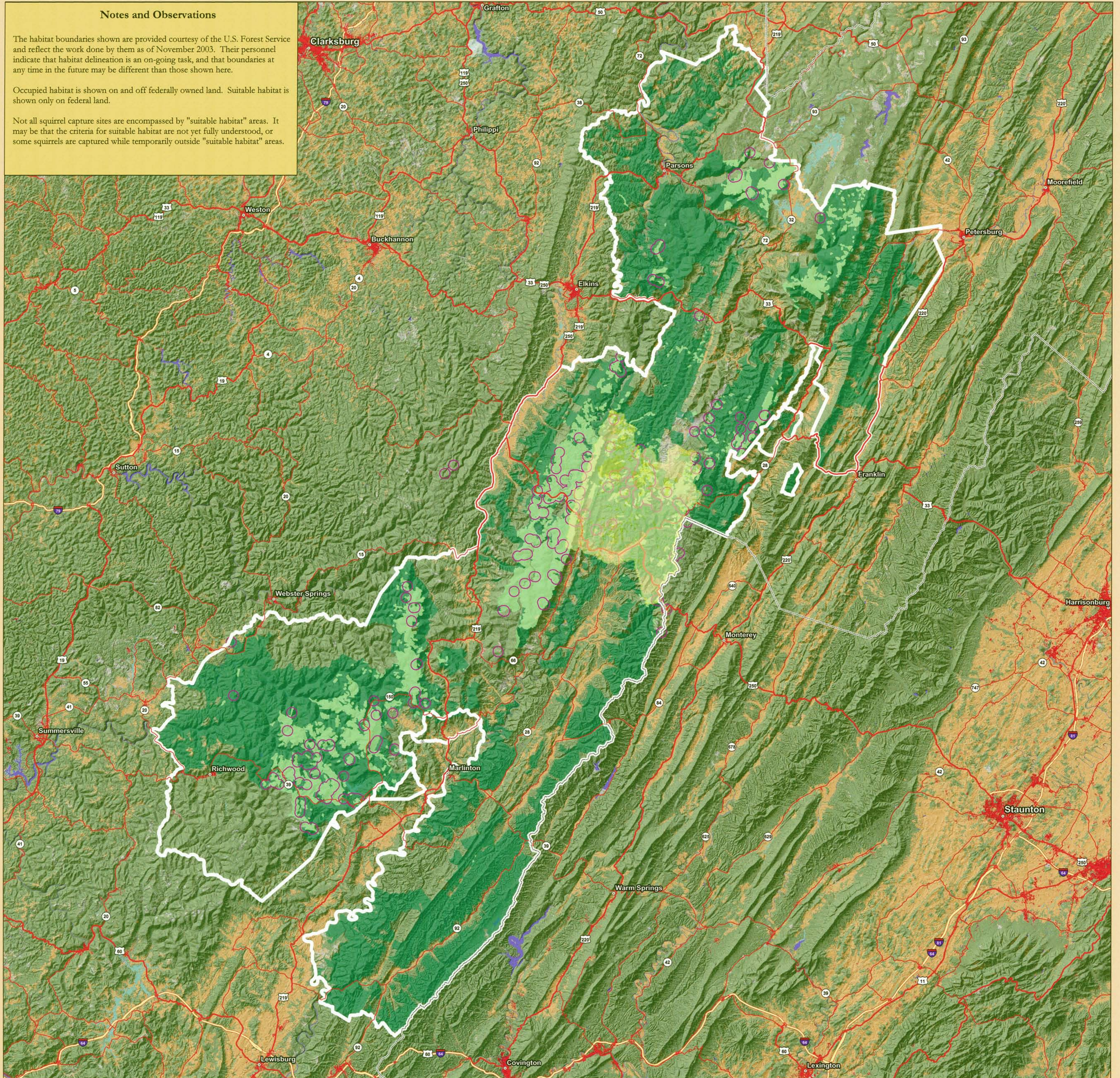
West Virginia Northern Flying Squirrel Habitat in the Monongahela National Forest

Notes and Observations

The habitat boundaries shown are provided courtesy of the U.S. Forest Service and reflect the work done by them as of November 2003. Their personnel indicate that habitat delineation is an on-going task, and that boundaries at any time in the future may be different than those shown here.

Occupied habitat is shown on and off federally owned land. Suitable habitat is shown only on federal land.

Not all squirrel capture sites are encompassed by "suitable habitat" areas. It may be that the criteria for suitable habitat are not yet fully understood, or some squirrels are captured while temporarily outside "suitable habitat" areas.



WV Northern Flying Squirrel Habitat

Suitable Habitat (green square) Occupied Habitat (purple square)

Other Features

National Forest Land (dark green square) National Forest Proclamation Boundary (white outline) Roads (red wavy line) State Boundary (blue wavy line)

0 5 10 15 20 Miles



Data provided by the Monongahela National Forest, U.S. Geological Survey, and ESRI



The Wilderness Society
Center for Landscape Analysis